

MOBEYE WATERGUARD

Mobeye CM2300FS



Get informed about changes in the water level via telephone call, SMS and email

Water damage is inconvenient and can be very expensive. The Mobeye WaterGuard Float Sensor is intended to alert you to the rise (or fall) of the water level. As soon as the float sensor is closed by any water based fluid, the Mobeye WaterGuard Float Sensor will send a notification. The float sensor is mounted in horizontal position at the place where the water level may rise or fall.



The Mobeye WaterGuard alerts with a telephone call, SMS and / or e-mail via the integrated GSM module. 'Confirmation' by the receiver will ensure that other contacts will not receive a call.

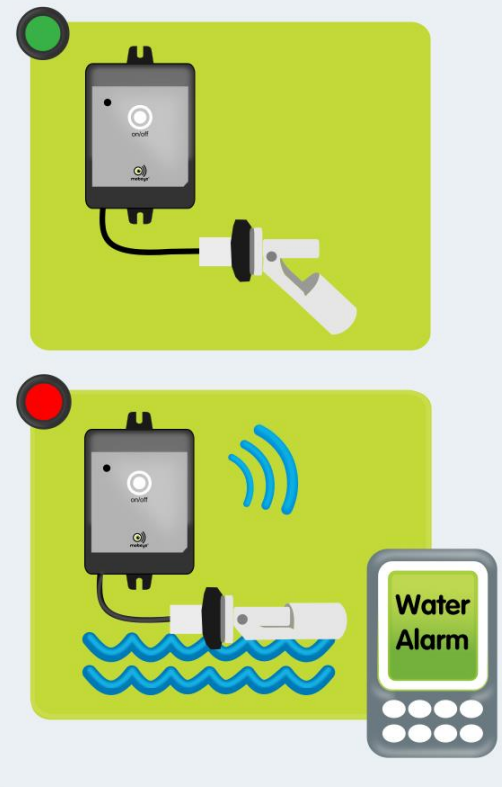
The Mobeye WaterGuard works entirely on batteries for more than a year. It is possible to connect a 12 VDC power source or power adapter. The user can opt to receive a 'power failure' alerts too.

The float sensor can be positioned as a normally opened or normally closed contact. The Mobeye WaterGuard has an additional input (NO/NC), e.g. for an additional water float sensor or as failure contact to monitor a water pump.



The CM2300 WaterGuard Leakage Sensor is an alternative version; it is equipped with a digital leakage sensor. As the copper pins detect water, the alert will be sent.

Mobeye WaterGuard.



Mobeye Internet Portal & SIM service

By registering the included multi-provider Mobeye SIM card and the Mobeye CM2300FS online, user convenience is added and additional features become available. The portal distinguishes between alarm messages and technical reports. The contact persons receive messages by call, text message and/or e-mail. The portal facilitates online programming and displays the status, such as the alarm status, network strength and history. The "keep-alive" monitor offers extra security by monitoring test reports. If the test report is not sent on time, the (technical) contact persons will receive a warning message from the portal.



Mobeye WaterGuard-FS Technical data	
Inputs	<ul style="list-style-type: none">• 1x float sensor• 1x NO/NC input• 12 VDC
User interface	<ul style="list-style-type: none">• On/off button• 1x status LED
Dimensions	<ul style="list-style-type: none">• 80 x 60 x 40 mm
(Alarm) messages	<ul style="list-style-type: none">• Alarm messages via call, SMS, and/or e-mail*: <i>confirmation by receiver of alarm is possible, so the next contact person does not receive a call</i><ul style="list-style-type: none">• after the float sensor closes or opens due to rising or falling of the water level• when an input is activated• when the external power fails and after power recovery• Warning messages via SMS and/or e-mail*:<ul style="list-style-type: none">• when the internal battery voltage is low• in the situation of a missed test report ("keep alive") (without using the portal: test notifications via SMS)
Reports	<ul style="list-style-type: none">• Status reports, settings report, GSM network strength, position data at last event (cell-id)*
Security	<ul style="list-style-type: none">• PIN code security for configuration
Configuration	Programming is done online in the Mobeye Internet Portal (or without Portal: via text messages): <ul style="list-style-type: none">• telephone numbers (max. 5, unlimited number of SMS / emails when using Mobeye Internet Portal)• identification and alarm texts, alarm delay times, alarm repeat times• input as NO or NC• automatic arming and disarming schemes; <i>two schemes possible, to be assigned to days of the week</i>• locking of on/off button possible• frequency of test messages
Sensor	<ul style="list-style-type: none">• Cable length: 1,5m (extendable with conducting wire)
Power supply	<ul style="list-style-type: none">• 2x CR123 lithium batteries (included) or• 12 VDC (or power adapter) + 2x CR123 lithium batteries
Battery lifetime	<ul style="list-style-type: none">• > 1 year at normal use (battery operated)• > 3 years at normal use (ext. power supply)
Ambient temperature	<ul style="list-style-type: none">• -10°C ... +55°C
GSM/GPRS	<ul style="list-style-type: none">• Quad Band EGSM 900/1800 - 850/1900 MHz



* e-mail function only possible when using the Mobeye Internet Portal

About Mobeye

The company Mobeye is specialized in high quality GSM-based alarm and telemetry technology. Mobeye products are characterised by configuration flexibility, user friendliness and an extremely low power consumption. Mobeye aims to design and market products that contribute to a safer world for its customers